

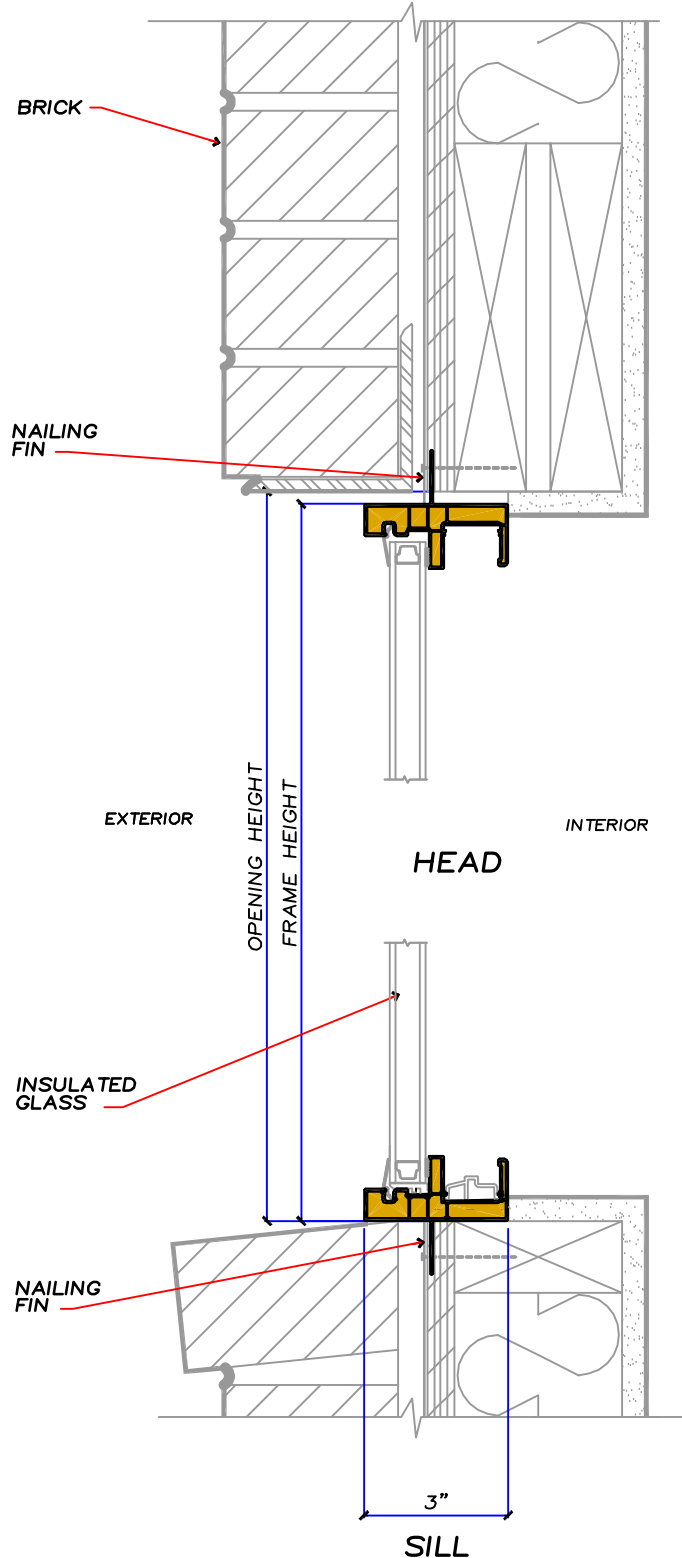


HORIZONTAL SLIDER

WALL SECTIONS

STUDIO SERIES BRICK

NOTE:
FOLLOW THE AMSCO INSTALLATION AND
FLASHING GUIDELINES RECOMMENDED
FOR PROPER HEAD, JAMB AND SILL
FLASHING PROCEDURES



VERTICAL SECTION
SCALE 3" = 1'-0"